



# dbWatch Control Center

## dbWatch Control Center Installation

---

**dbWatch Control Center Server Installation on Windows**

**Chad Pabalan  
Product Specialist  
dbWatch AS  
July 2020**

**Updated by:**

**Per Christopher Undheim  
Product Manager  
dbWatch AS  
November 2022**

**Contents**

Introduction..... 2

Document changes ..... 3

Hardware requirements..... 4

Software requirements..... 5

    OS installation..... 5

    Download Control Center ..... 12

    dbWatch Control Center installation ..... 13

    Setting up dbWatch Control Center ..... 17

    Set as demo server ..... 20

    Set as domain controller ..... 21

## Introduction

This document provides information on hardware requirements, installations procedures, tuning and requirements for setting up a Control Center. This paper is used as a basis for installation on both small and large environments.

One of the key benefits with dbWatch Control Center is the ability to monitor many databases regardless of platform or database type. Any combination of supported database types or platforms can be used in the same database server. For large environments, it is possible to use more than one Control Center Server and the client software supports connecting to multiple dbWatch Servers from the same interface. Contact support if you require help for setting up dbWatch Control Center to monitor large database environments.

## Document changes

V1.0	Original document
V2.0	Update Control Center White Paper to latest version
V3.0	Update Control Center White Paper to latest version

## Hardware requirements

For this installation we are installing Control Center Server on a machine with the following hardware specifications:

- VMware machine with 4 cores
- 250 GB hard disk
- 8 GB RAM

Minimum requirements:

- 4 CPU cores
- 250 GB hard disk
- 8 GB RAM

Installation on both VMware, EC2 and physical host is also supported. Similar hardware requirements apply. You can read about the software installation in our [online documentation](#).

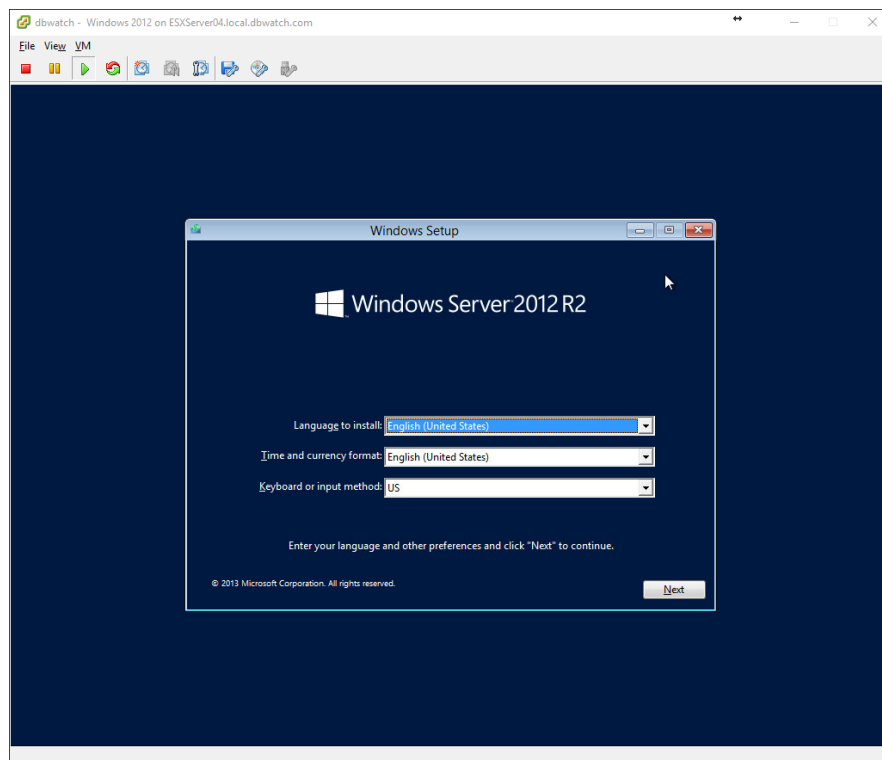
## Software requirements

We are using Windows Server 2012 64 bit for this install. The hostname we have chosen for this example machine is “dbwatch”. Pictures from the installation are from installation on VMware ESXi.

The OS can be from Windows Server 2008 R2 or newer, or Windows 10.

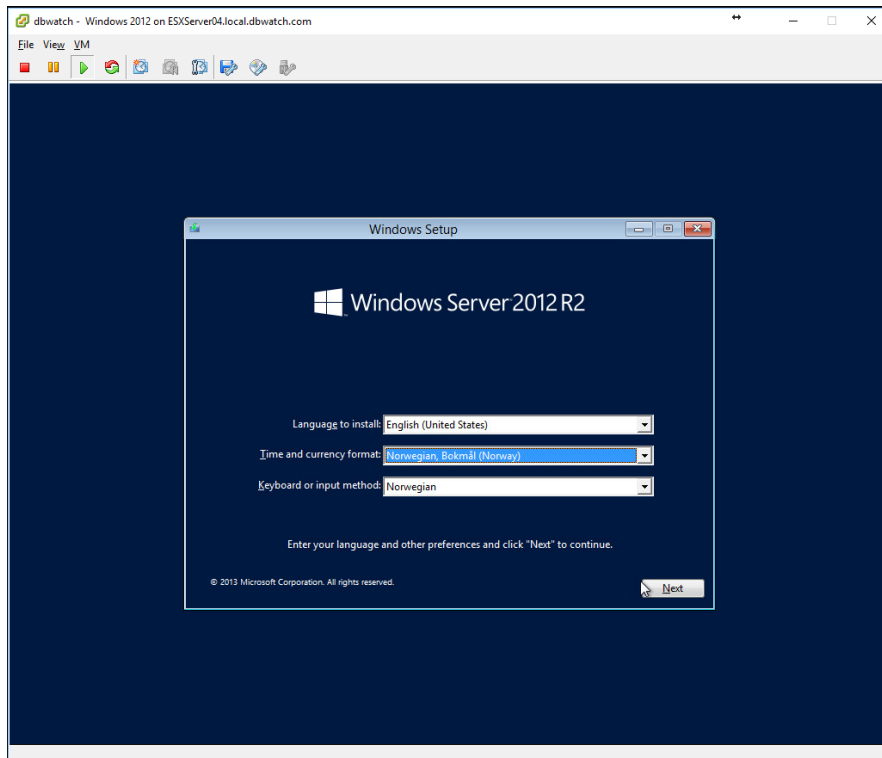
## OS installation

We do a step-by-step installation guide on the basic OS installation with screen shots of all the windows we encounter. Some choices may be different, such as network configuration or country or language variables.

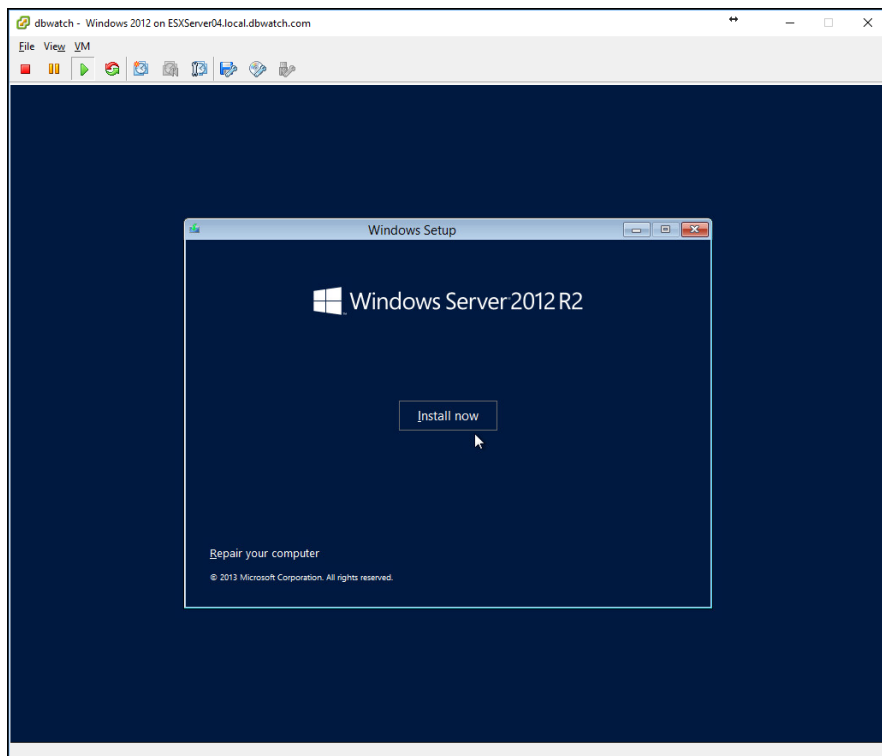


Make your Language, time and currency format, and keyboard or input method settings as your find appropriate for your installation.

## White Paper – Control Center Server install guide on Windows

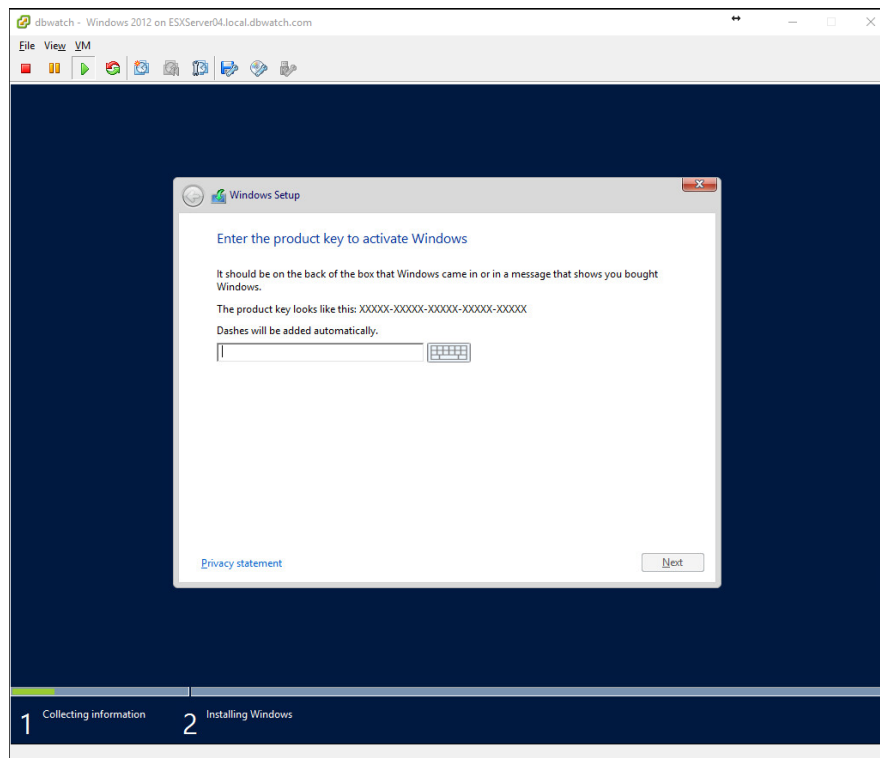


Once you have made your choices, click next to continue.

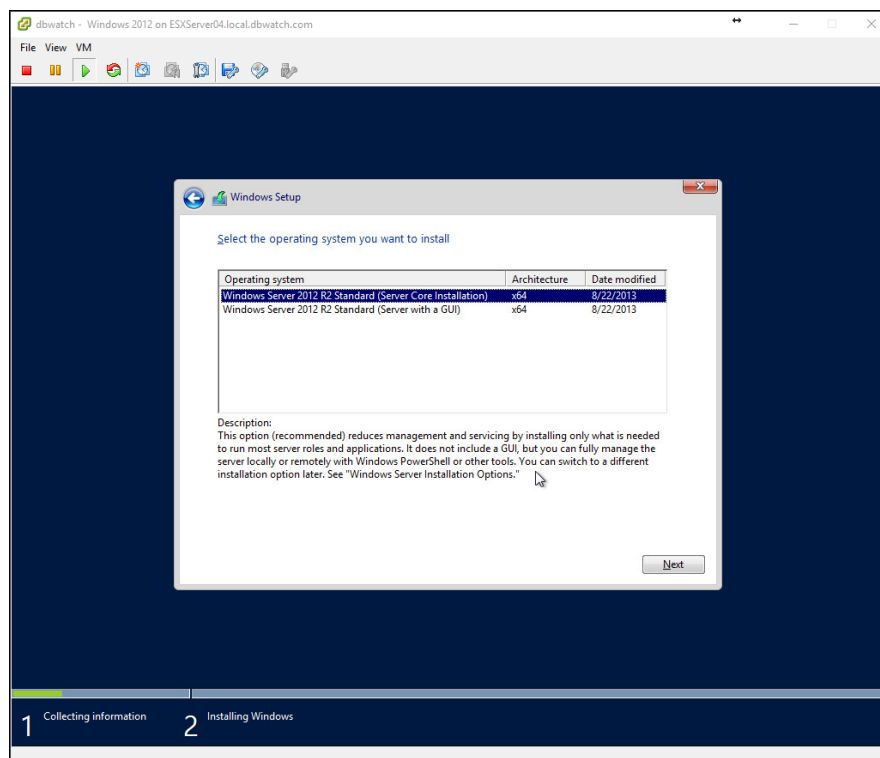


Click Install now to start the install.

## White Paper – Control Center Server install guide on Windows

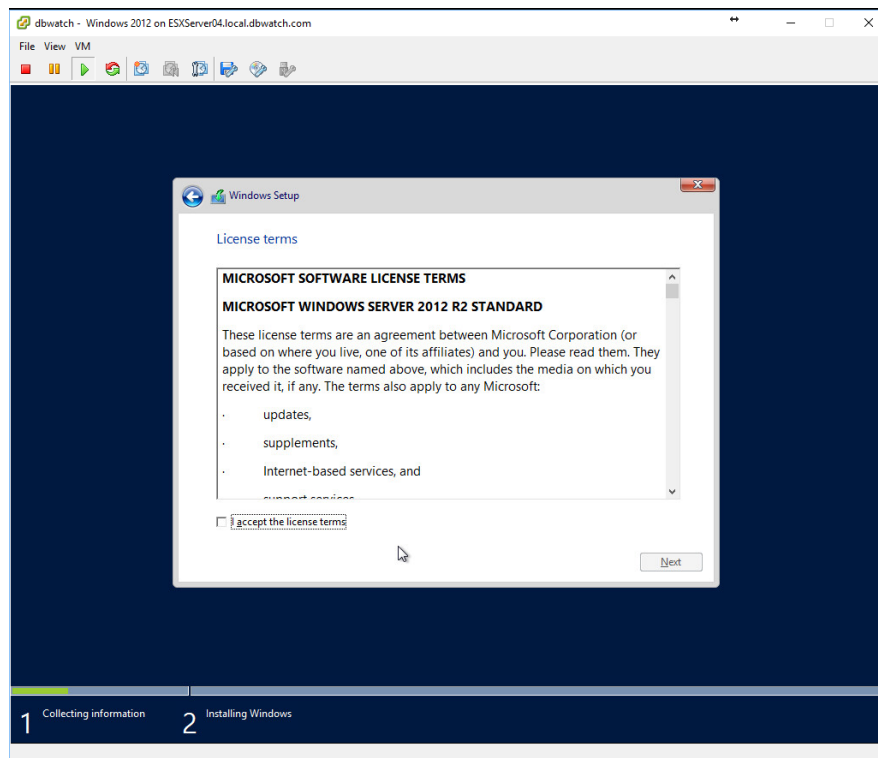


Enter your license key. Click Next to continue.

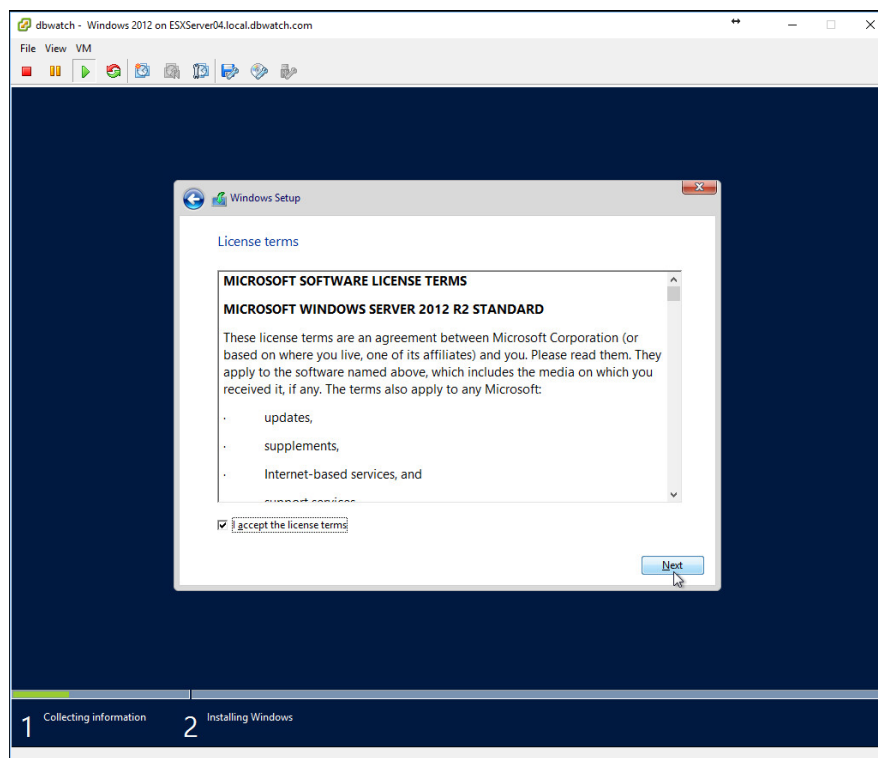


We pick the version "Server with a GUI". Click Next to continue.

## White Paper – Control Center Server install guide on Windows

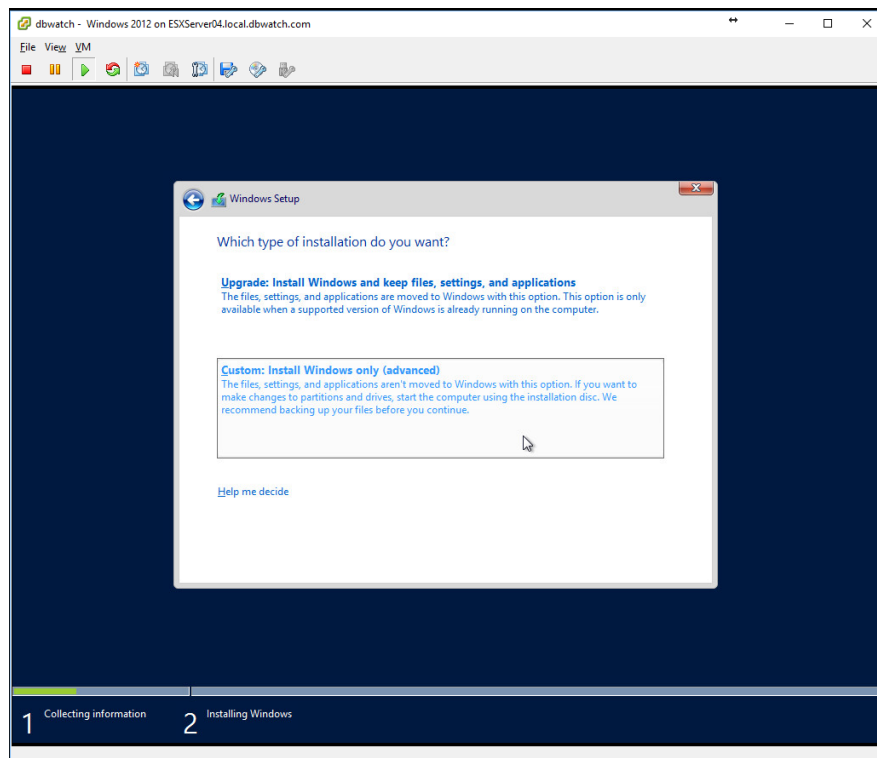


Click in front of the “I accept the license terms” text if you accept the license terms.

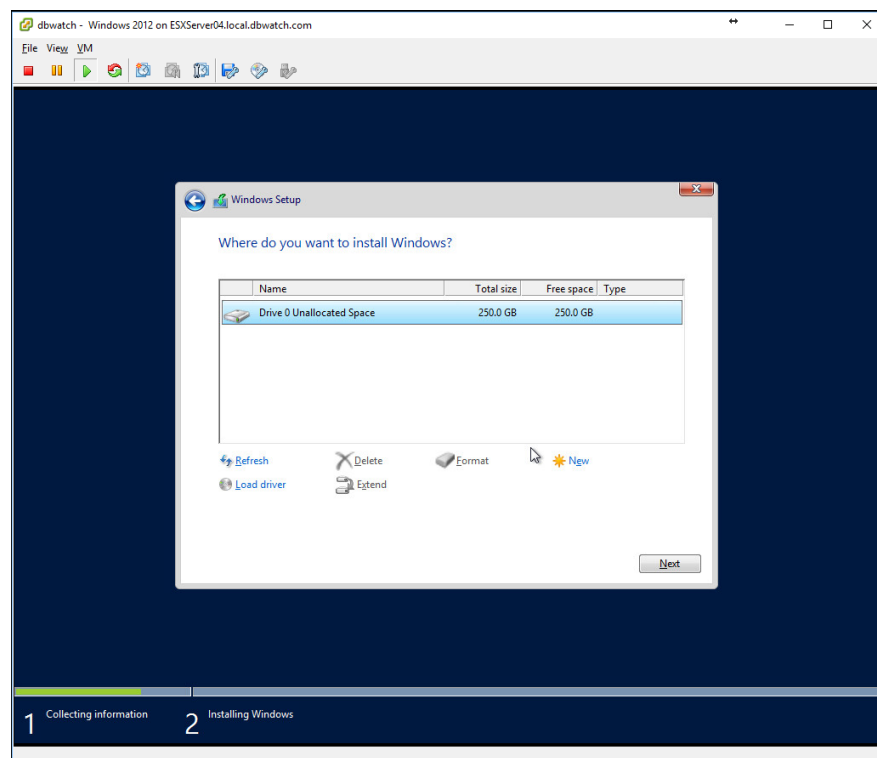


Click Next to continue.

## White Paper – Control Center Server install guide on Windows

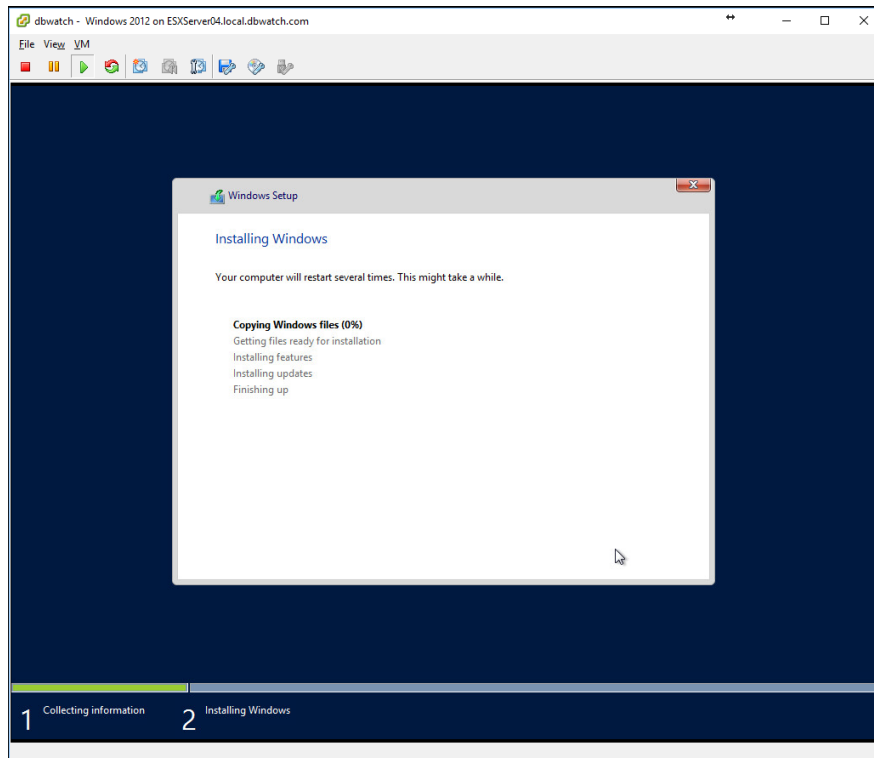


We chose a custom install. Click on the custom text field.

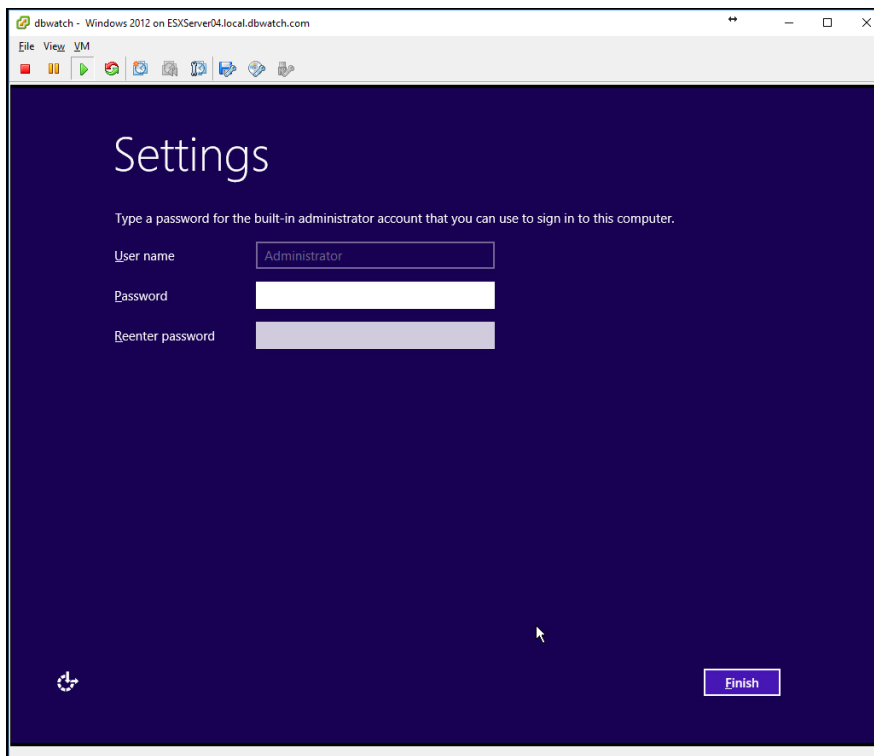


We chose to install Windows on our 250 GB unused disk. Click Next to continue.

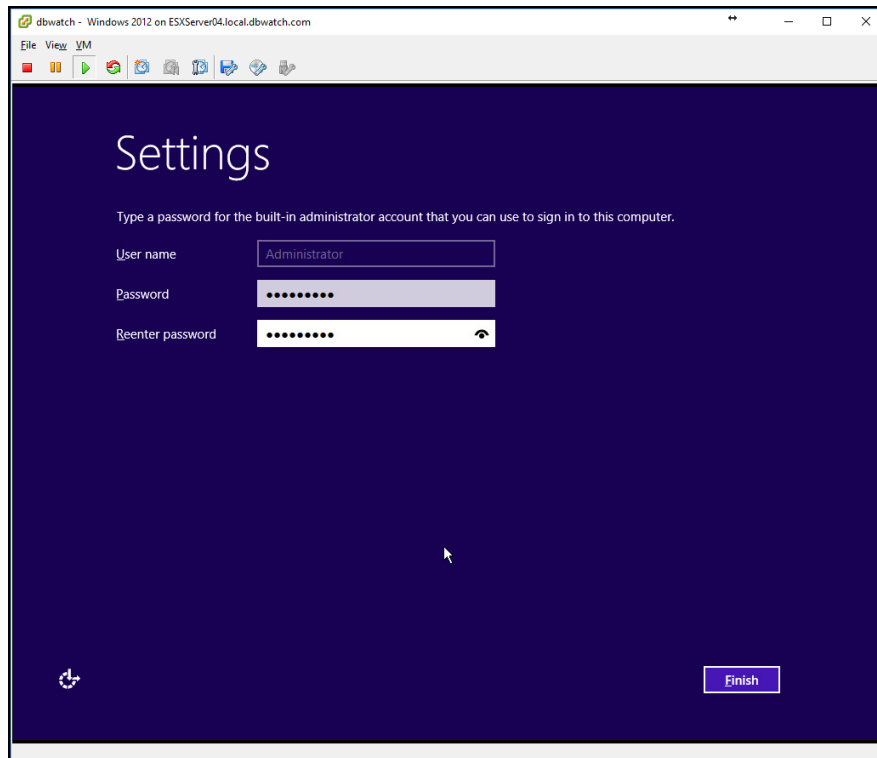
## White Paper – Control Center Server install guide on Windows



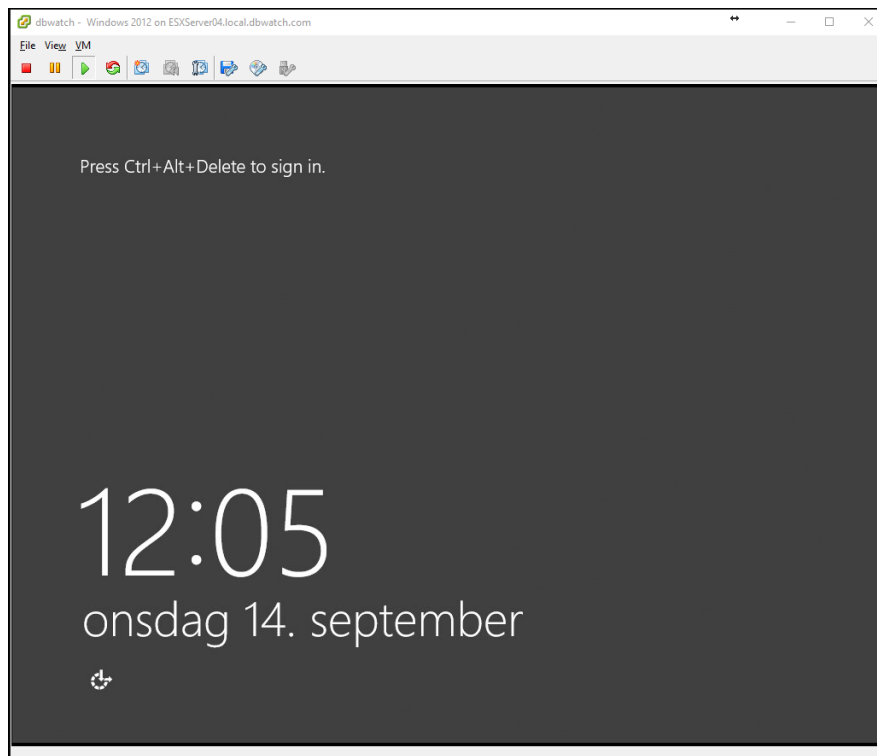
The install will run for a while and restart in the end.



Once the install has finished, we are ready to set the password for the administrator user. Chose a secure password, with both upper- and lower-case letters, numbers, and special characters. dbWatch relies on the security of the server it runs on to protect the important configuration files.



Once a proper password has been entered we can click on the arrow button.



Our password has been changed to a good and secure password. Press ctrl+alt+del to login. If this is a VmWare host, you should install the VmWare tools package as well.

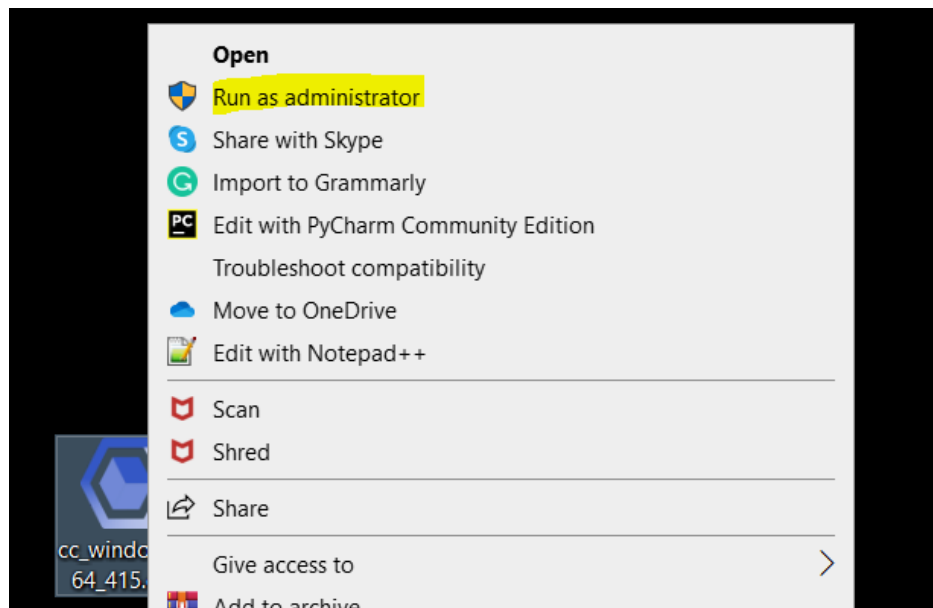
## Download Control Center

To down the latest version, you can check the version summary for dbWatch Control Center by following this [link](#).

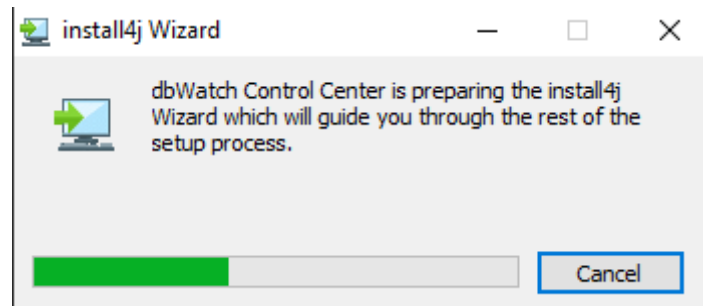
Alternatively, you can check it out by going to the [release notes](#) of the same online documentation.

## dbWatch Control Center installation

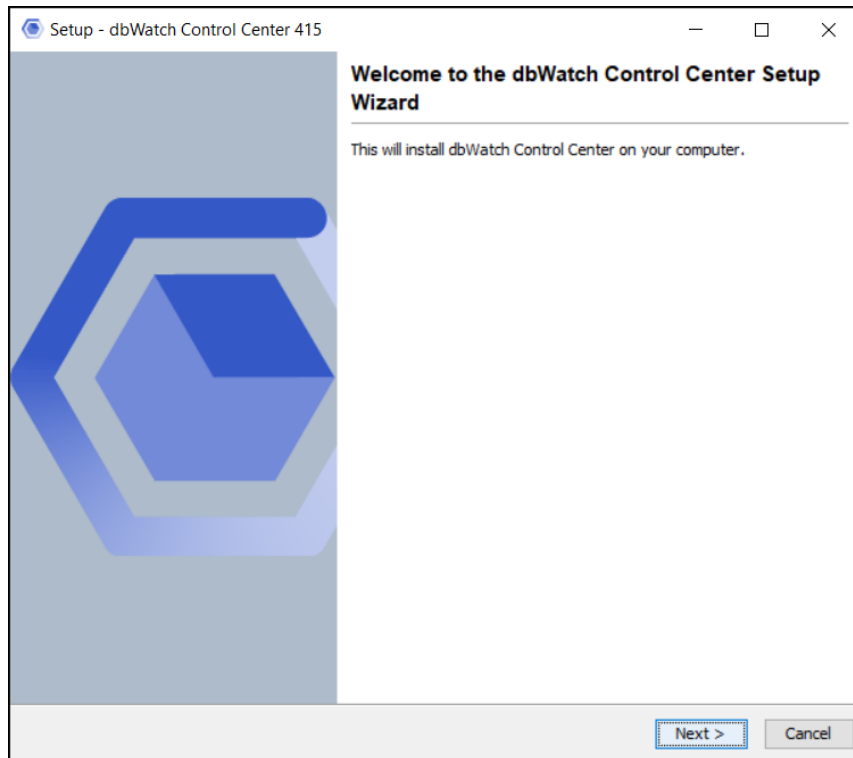
Download the installer and run as administrator.



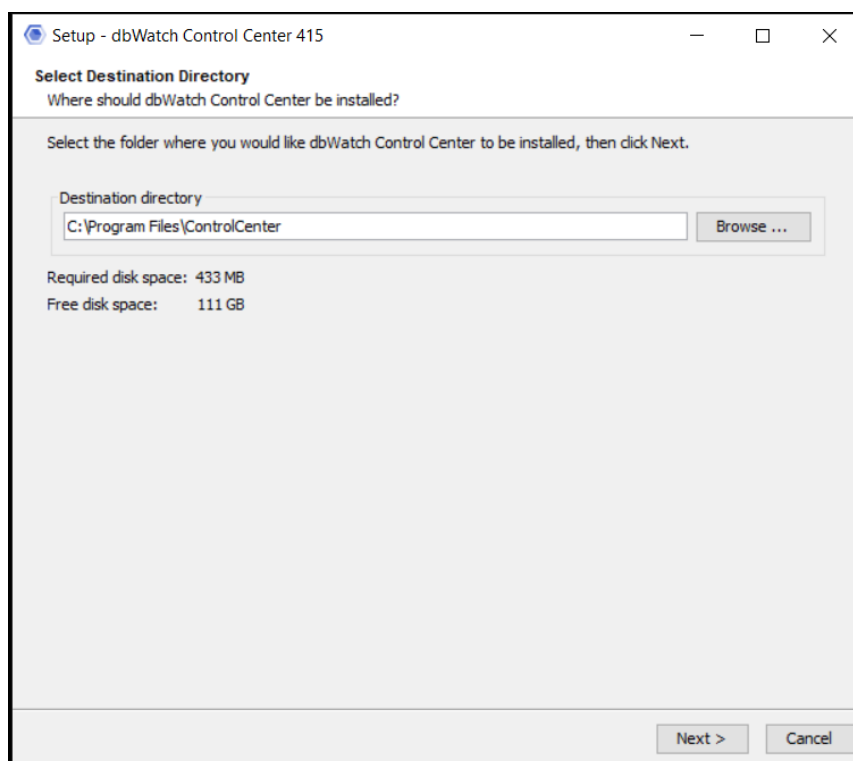
You will see the prompt for the installation wizard.



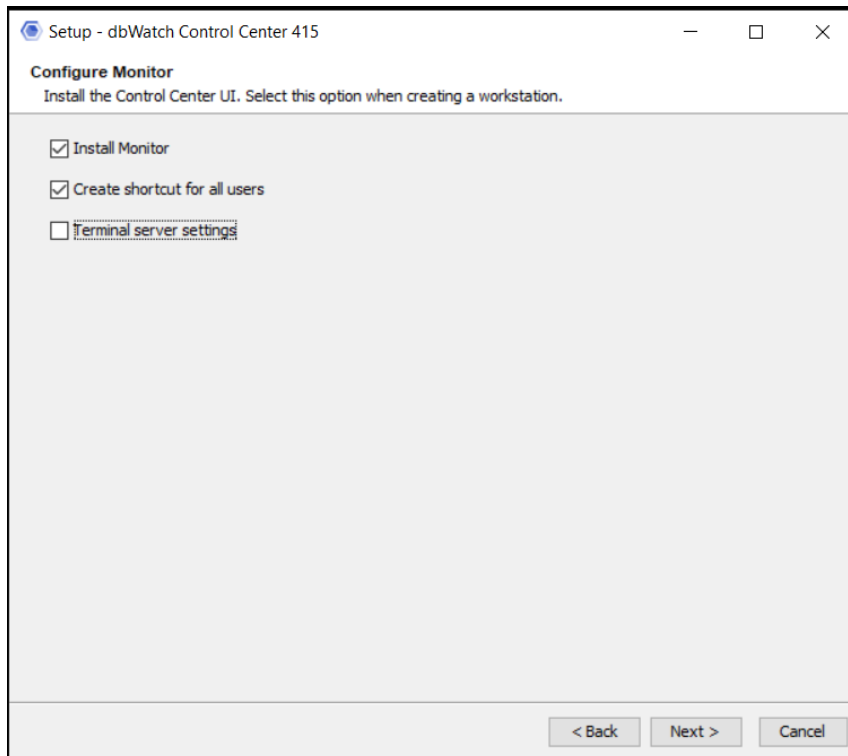
Please wait until the Control Center installation window appears.



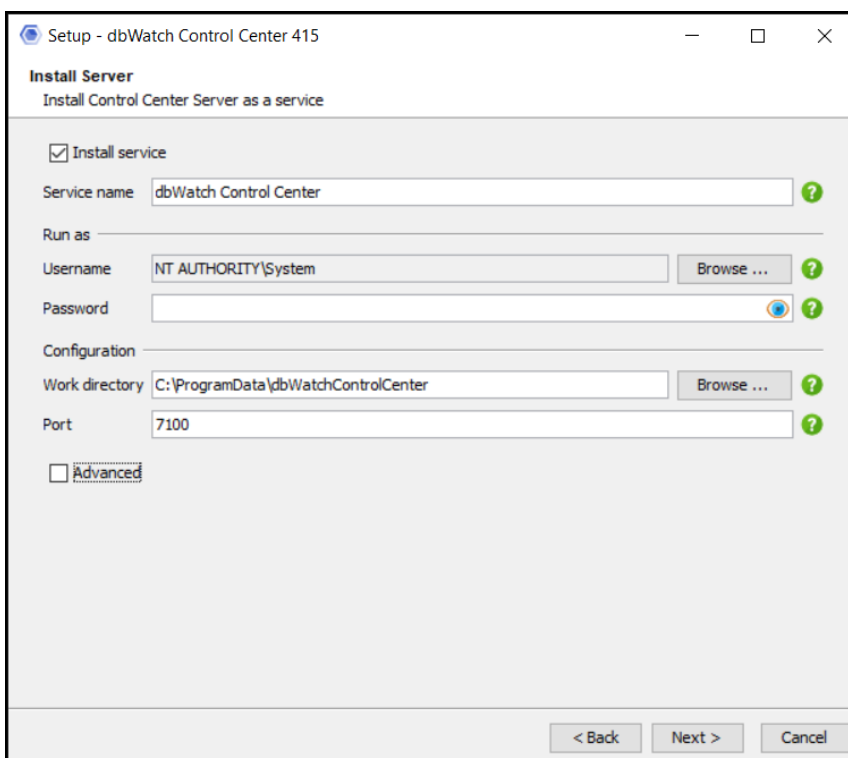
. Click “Next” to allow the install to continue.



Specify directory where you want to install Control Center. Then, click Next.

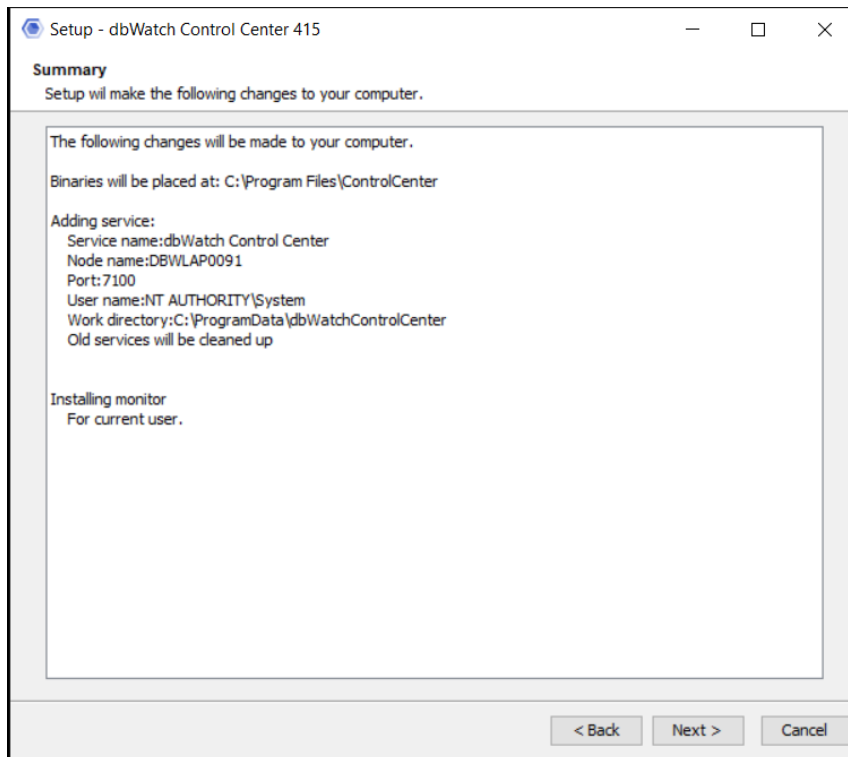


Configure the monitoring application by ticking the appropriate boxes. By default, dbWatch will Install the monitoring UI and create a shortcut for all users.

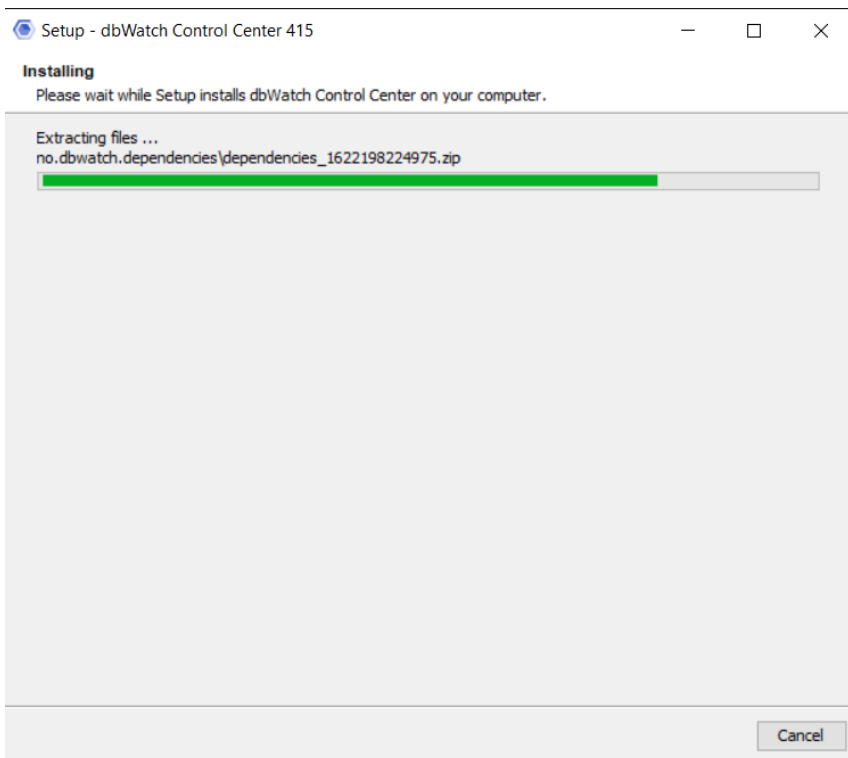


Specify the service name and the credentials it will run with. Also, you can set the working directory to where you want it to be. Finally, specify the port where dbWatch will be listening.

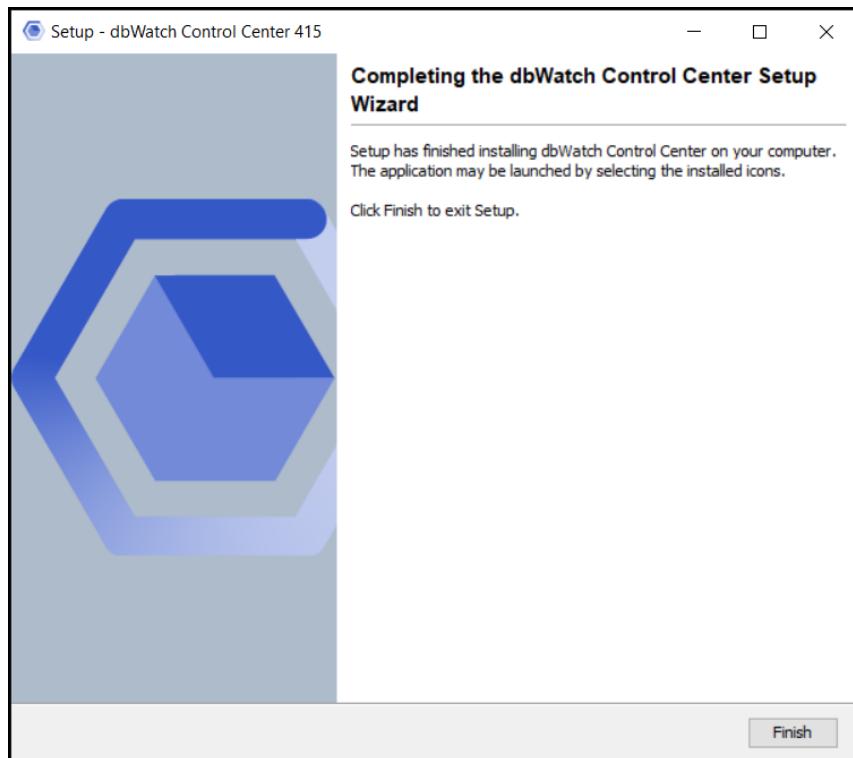
If you already have an existing dbWatch Control Center Server (Service) you can untick this checkbox and just install the dbWatch Control Center Monitor. Click Next to proceed to the final step.



Review all the information provided. Once you are good with them. Click Next.



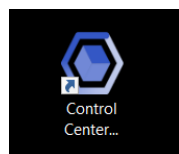
Wait for the installation to commence. Once done, you are down with dbWatch Control Center installation.



**We have now successfully installed dbWatch Control Center on our server.**

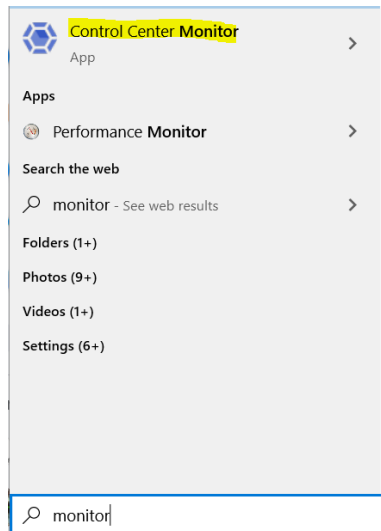
### Setting up dbWatch Control Center

Now, open dbWatch Control Center by clicking in the shortcut icon.



Alternatively, you can search for “Control Center Monitor” in the windows search tab.

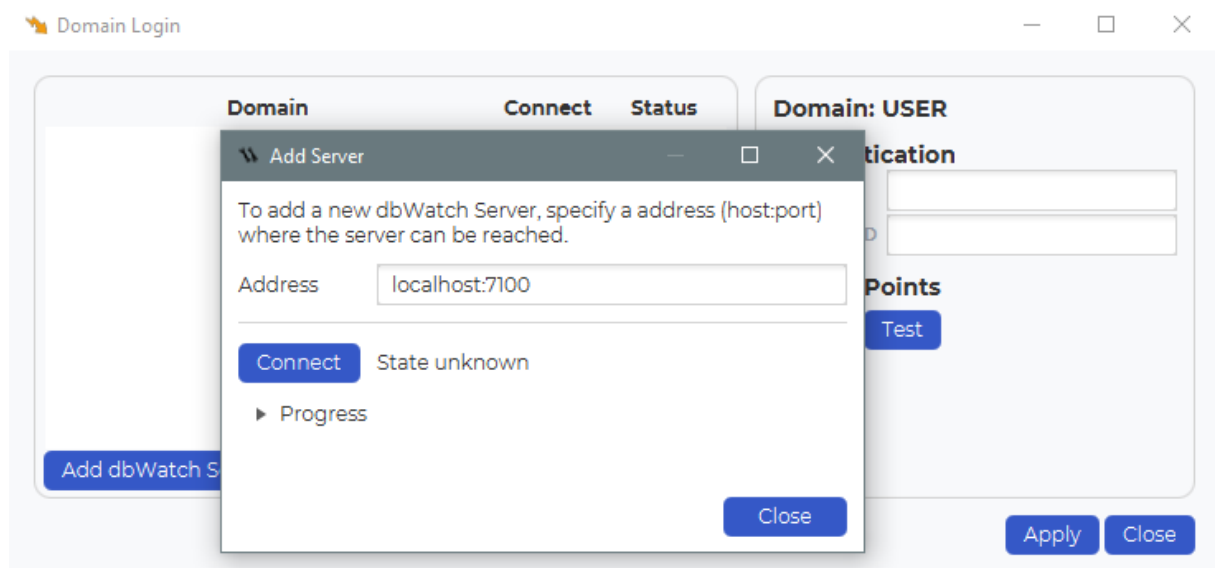
## White Paper – Control Center Server install guide on Windows



Wait for dbWatch to initialize. You will see the loading screen.

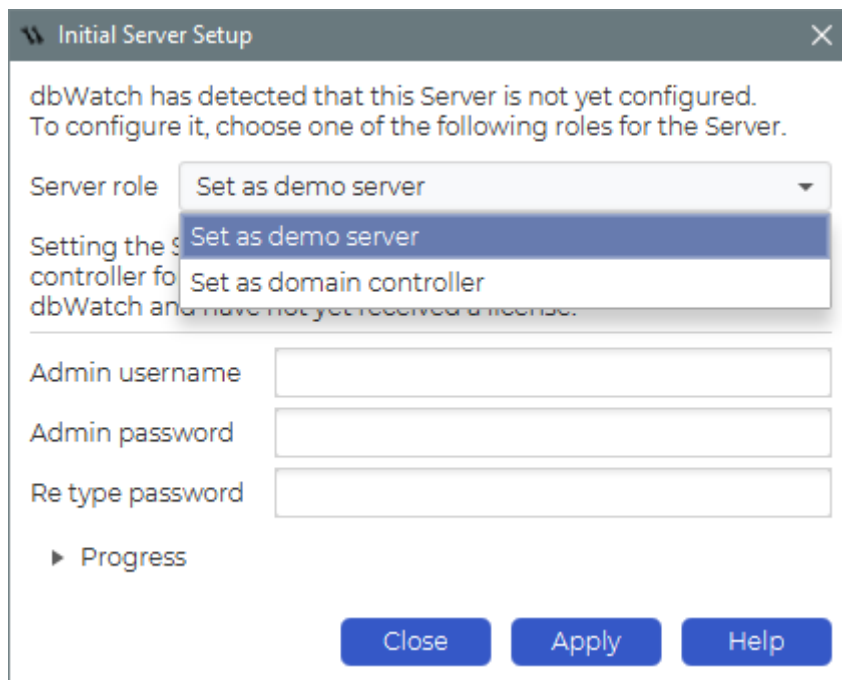


You will see the dbWatch UI and upon first installation, it will ask you to connect to a dbWatch Server. If this is run initially from the dbWatch Server itself, the server would be on localhost as shown. The default port is 7100. Enter the address and click “Connect”.

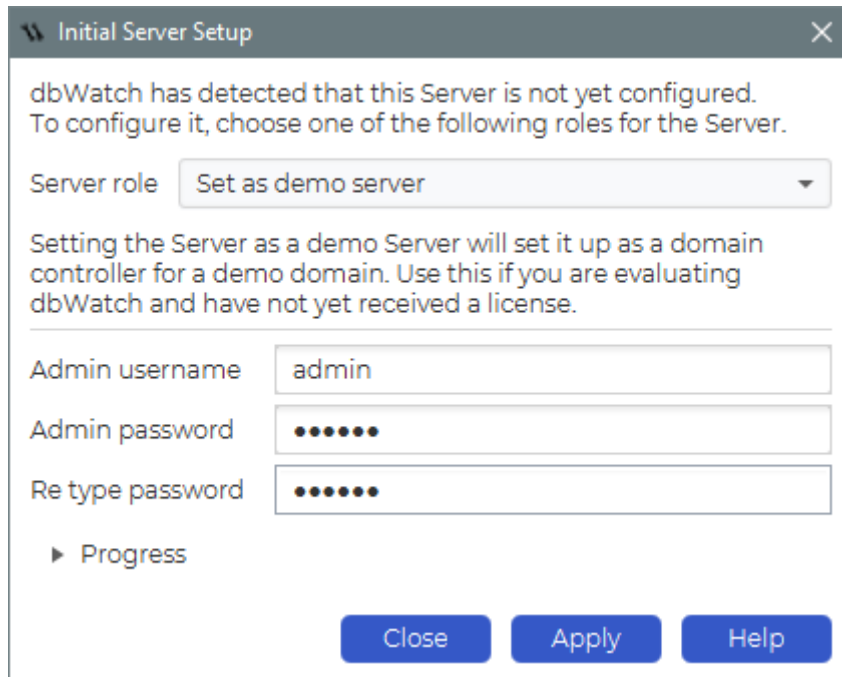


If the dbWatch Monitor is able to connect to the dbWatch Server, you are given 2 choices to configure the Server.

- Set as demo server  
Use this if you are evaluating dbWatch, and have not yet received a license. This will create a demo license for you.
- Set as domain controller  
Use this if you have a license and want to configure a production domain controller.



### Set as demo server



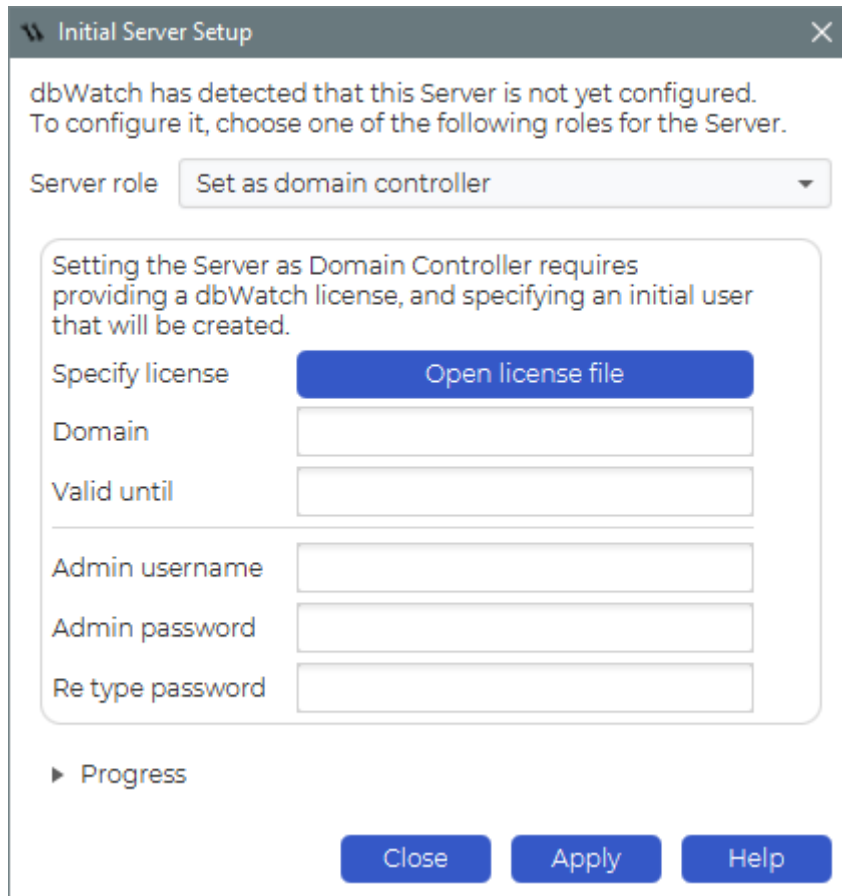
The image shows a Windows-style dialog box titled "Initial Server Setup". It contains the following elements:

- A message: "dbWatch has detected that this Server is not yet configured. To configure it, choose one of the following roles for the Server."
- A dropdown menu labeled "Server role" with the selected option "Set as demo server".
- Explanatory text: "Setting the Server as a demo Server will set it up as a domain controller for a demo domain. Use this if you are evaluating dbWatch and have not yet received a license."
- Input fields for "Admin username" (containing "admin"), "Admin password" (masked with dots), and "Re type password" (masked with dots).
- A "Progress" indicator with a right-pointing triangle.
- Three buttons at the bottom: "Close", "Apply", and "Help".

If you want to setup a demo server, select this option, and fill in a username and password. This will be used to create an admin user in dbWatch.

This user will have the "Domain Admin" role, which means that the user will be allowed to edit the security settings and define new users.

### Set as domain controller



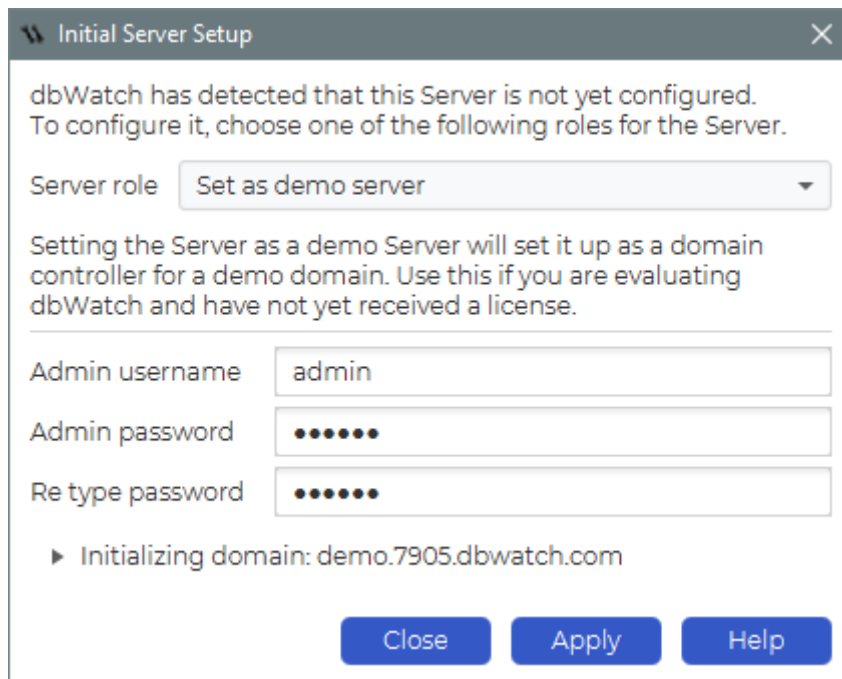
The image shows a screenshot of the 'Initial Server Setup' window. At the top, it says 'dbWatch has detected that this Server is not yet configured. To configure it, choose one of the following roles for the Server.' Below this is a dropdown menu for 'Server role' with 'Set as domain controller' selected. A message box states: 'Setting the Server as Domain Controller requires providing a dbWatch license, and specifying an initial user that will be created.' Below this message are several input fields: 'Specify license' with an 'Open license file' button, 'Domain', 'Valid until', 'Admin username', 'Admin password', and 'Re type password'. At the bottom left is a 'Progress' indicator with a right-pointing arrow. At the bottom right are three buttons: 'Close', 'Apply', and 'Help'.

If you have a license and want to setup a domain controller, select this option.

Click on “Open license file” and select your license. If the license is valid the “Domain” and “Valid until” fields will be filled.

Then specify a username and password, this will be used to create an admin user in dbWatch. This user will have the “Domain Admin” role, which means that the user will be allowed to edit the security settings and define new users.

Next click on “Apply”. The dbWatch Server will be initialized as either a demo server or a licensed server, depending on your choice.



The 'Initial Server Setup' dialog box has a title bar with a dbWatch logo, the text 'Initial Server Setup', and a close button. The main text reads: 'dbWatch has detected that this Server is not yet configured. To configure it, choose one of the following roles for the Server.' Below this is a 'Server role' dropdown menu with 'Set as demo server' selected. A paragraph explains: 'Setting the Server as a demo Server will set it up as a domain controller for a demo domain. Use this if you are evaluating dbWatch and have not yet received a license.' There are three input fields: 'Admin username' with 'admin', 'Admin password' with masked characters, and 'Re type password' with masked characters. A progress indicator shows '► Initializing domain: demo.7905.dbwatch.com'. At the bottom are 'Close', 'Apply', and 'Help' buttons.

Initial Server Setup

dbWatch has detected that this Server is not yet configured. To configure it, choose one of the following roles for the Server.

Server role Set as demo server

Setting the Server as a demo Server will set it up as a domain controller for a demo domain. Use this if you are evaluating dbWatch and have not yet received a license.

Admin username admin

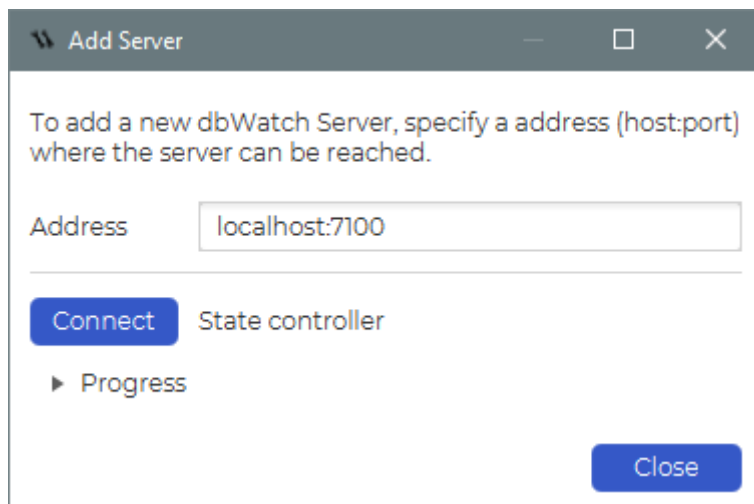
Admin password

Re type password

► Initializing domain: demo.7905.dbwatch.com

Close Apply Help

When the initialization process is complete, wait until the “Add Server” dialog has a “State controller” status.



The 'Add Server' dialog box has a title bar with a dbWatch logo, the text 'Add Server', and standard window controls. The main text reads: 'To add a new dbWatch Server, specify a address (host:port) where the server can be reached.' Below this is an 'Address' input field with 'localhost:7100'. A 'Connect' button is followed by the text 'State controller'. A progress indicator shows '► Progress'. At the bottom right is a 'Close' button.

Add Server

To add a new dbWatch Server, specify a address (host:port) where the server can be reached.

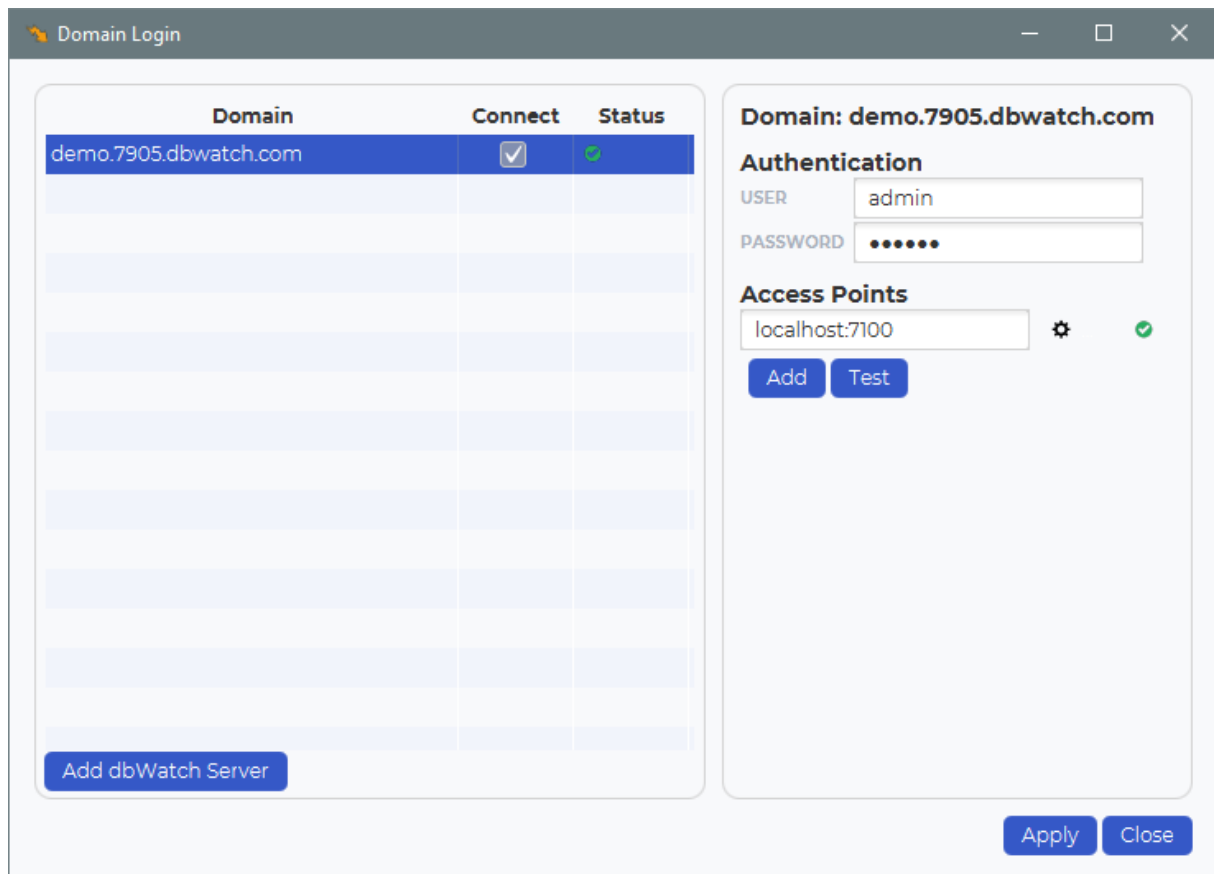
Address localhost:7100

Connect State controller

► Progress

Close

Close this window.



When everything is ready, the “Status” icon for the domain should turn green.

Now you’re done with setting up dbWatch Control Center. You can check out our online documentation for more information on the installation and setting up dbWatch Control Center. Follow the [link](#) provided.